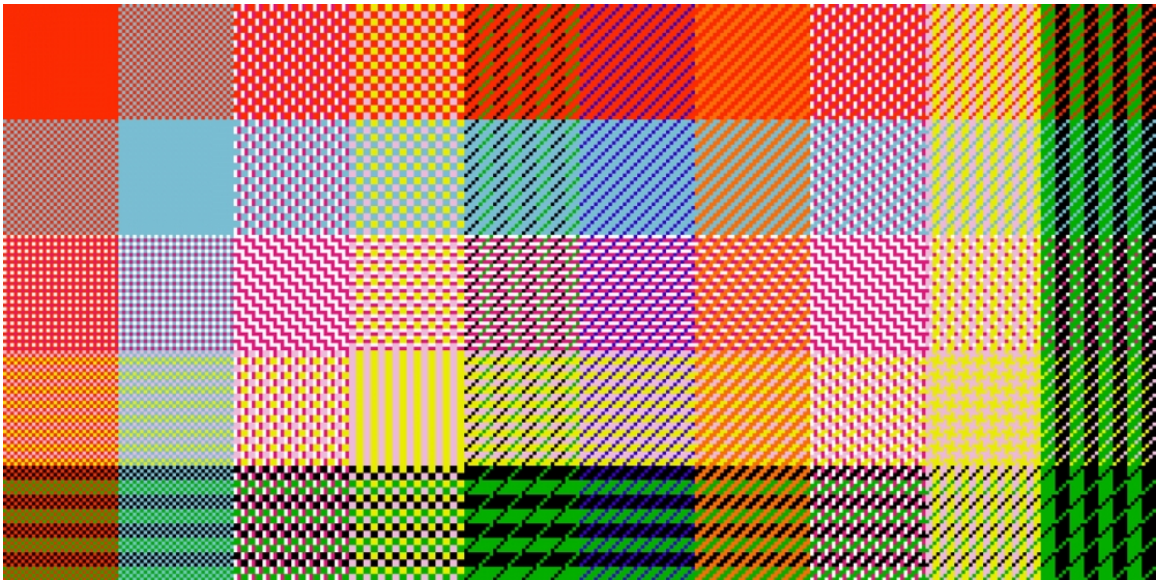


BLOUINARTINFO

Samantha Bittman's "Interlace" at MAD, New York

BY BLOUIN ARTINFO | AUGUST 30, 2018



"Interlace," 2018, Samantha Bittman Photo by Jenna Bascom. (Courtesy of the Museum of Arts and Design)

The Museum of Arts and Design, New York, is featuring "Interlace," a large-scale vinyl mural by Brooklyn-based artist Samantha Bittman. On view through September 6, this work is showcased at 1ST SITE, a new project space launched at the museum this spring.

"Interlace" wraps the entry-level elevator bank at the museum space in a colorful, oversize weaving draft, a design that weavers follow to work out their designs in advance. "Interlace" represents a "sample blanket," a textile that uses different combinations to weave structures, yarn, and color.

Samantha Bittman is an artist and educator based in Brooklyn, New York. To draw together the relationship between the handcrafted and the digital is characteristic of Bittman's work.

"The artist," writes MAD, "sets her hand-painted, hand-woven textiles against the backdrop of digitally printed wallpaper, for which she creates graphics using Photoshop. She sets the resolution of the wallpaper (pixels per inch) to the thread count of the painting that will hang on it, such that the wallpaper becomes an extension of the painting as well as a support, fusing weaving, painting, and graphics in a multilayered exploration of pattern."

Bittman works on a 12-harness floor loom; she weaves patterned textiles, stretches them over a wooden frame and applies acrylic paint onto select threads. With the juxtaposition of a very old practice with modern software, the artist aims to highlight the similarities between the two. In the case of "Interlace," she highlights the resemblance between the "grid-based warp and weft interlacements of handwoven cloth and the pixelated Photoshop file."

Referencing weavers and painters alike, Bittman carves out a shared niche between weaving and painting, and draws them together through an exploration of figure-ground.

The exhibition is on view through September 6, 2018 at the Museum of Arts and Design, 2 Columbus Circle, New York, NY 10019, USA.